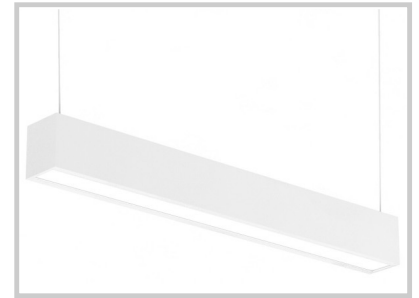
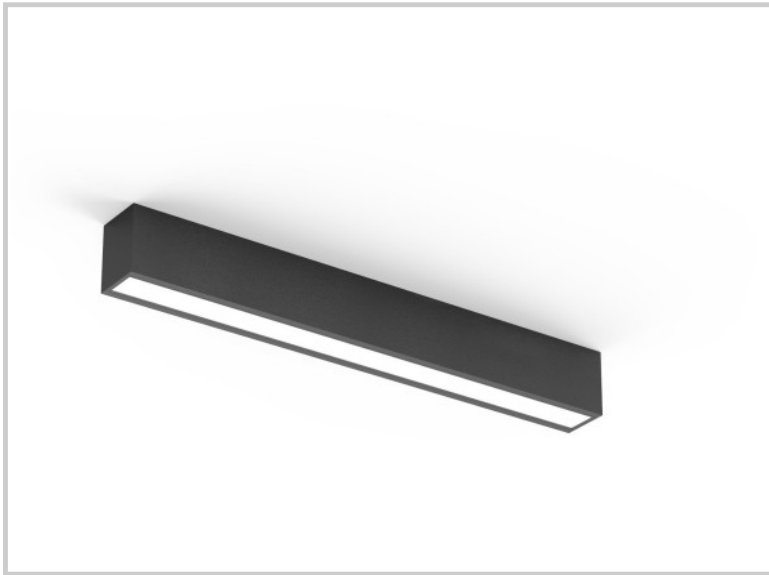


Reference: C11013

ORI 1200 C11013



| | |
|------------------------------|-----------------------|
| Length (mm) | 1204 |
| Width (mm) | 60 |
| Height (mm) | 70 |
| System power (W) | 40W |
| Luminous flow (lm) | 4800lm |
| Voltage | 200-240V AC |
| Degree of protection | IP20 |
| Luminaire life (h) | 50'000 |
| Driver lifetime (h) | 50'000 |
| Beam angle | 100° |
| Finishing | White |
| Light source | SDM |
| IRC | >80 |
| Diffuser | Opal |
| Fixation | Applique / Suspendu |
| Matter | Aluminium / Plastique |
| Color temperature | 5700K |
| Light regulation | On / Off |
| Operating temperature | -20°C ~45°C |
| Efficiency | ~120lm/W |
| Flicker | Non-scintillant |
| Weight | 2,2Kg |